

Cook
County
Department
of Public
Health

Dental
Program
Summary

December 2010

COOK COUNTY DEPARTMENT OF PUBLIC HEALTH

Stephen A. Martin, Jr., Ph.D., M.P.H.

Chief Operating Officer, Cook County Department of Public Health

Linda Rae Murray, M.D., M.P.H.

Chief Medical Officer

Director of Dental Services

Copyright Information

All materials contained in this report are in the public domain and may be used and reprinted without special permission; citation as to source, however, is appreciated.

Cook County Department of Public Health
Protecting the Health and Environment of Suburban Cook County
Affiliate, Cook County Health and Hospitals System
1010 Lake Street, Suite 300
Oak Park, IL 60301

CCDPH Dental Program and Historical Purpose

The Cook County Department of Public Health (CCDPH) is the local health department certified by the Illinois Department of Public Health (IDPH) with jurisdiction throughout suburban Cook County except in Evanston, Skokie, Stickney and Oak Park, which are served by other IDPH certified local health departments. CCDPH operates the Dental Program at several health clinics.

The history of the CCDPH dental program included the application of dental sealant in schools and clinics to pediatric clients with funding through the IDPH as a primary prevention strategy to prevent dental caries/cavities. The dental program also focused primary prevention activities on pregnant clients to prevent dental disease including tooth loss that occurred with poor oral hygiene and nutritional deficiencies during the prenatal period. Prevention activities primarily focused on medically indigent clients. When pediatric and pregnant clients became eligible for Medicaid programs such as MPE (Medicaid Presumptive Eligibility) and All Kids, dental services were covered and clients could receive these services in the community from Medicaid enrolled providers. CCDPH then focused its efforts on the uninsured, medically indigent adult population that was not eligible for Medicaid. The focus shifted from a primary prevention to a primary care. Clients received both prophylactic care (e.g. cleaning/screening) and primary care (e.g. fillings, simple extractions).

CCDPH Dental Program Purpose/Mission

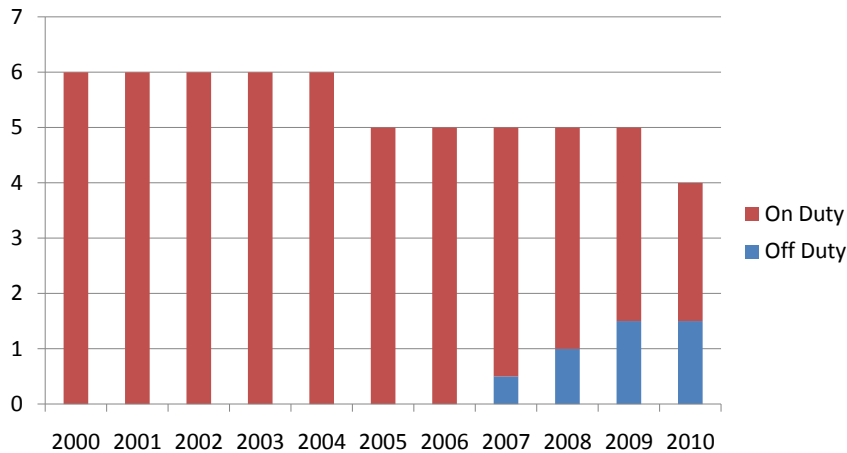
It is the mission of CCDPH to protect and promote the health of the people of suburban Cook County and to prevent disease and injury through the activities of the Department such as the dental program. This is accomplished by controlling, treating, or preventing dental disease. However, the Dental Program is not a mandated activity required for state-certification or national accreditation.

Description of Dental Program 2000-2010

In 2000, CCDPH employed seven dentists where one dentist was a supervisor who never saw patients. For budgetary and efficiency reasons, that position was eliminated. The productivity data recorded in the graph below (Figure 1) for the years 2000 to 2004 reflects the work of the six full time dentists seeing patients in our dental clinics.

Figure. 1

Staffing patterns for CCDPH Dentists



Blue Off duty represents: Military Service, extended sick leaves, covering services at Juvenile Detention Center, and H1N1 pandemic response

Between the years 2000 and 2005, Rolling Meadows, Skokie, Maywood, Bridgeview, Robbins (ACHN), Markham, Cottage Grove (ACHN) and South Holland dental clinics were active.

The staffing pattern for CCDPH Dental never included dental hygienists. This decreases the productivity of the dentists and limits the number of patients that can be served. CCDPH employs dental assistants that function to provide clerical and other support services. From 2005 to 2010 the following activities occurred in the Dental Program:

1. In June 2005, the Markham Office dental staff and patient records were relocated from Markham to the South Holland Dental clinic which opened that year. The new dental center at South Holland which replaced the Markham office, which was housed inside a courthouse building and not operationally friendly to our young client base. In addition, one CCDPH Dentist retired that year.
2. In January 2006, the Robbins Dental (fulltime clinic) activity stopped and patients were referred to the remaining CCDPH Dental Offices. The Robbins and Cottage Grove (ACHN Facilities) Dental clinics were only open part-time operations to assist ACHN and provide a continuity of care model.
3. Due to the retirement of one dentist, the Skokie Dental clinic completely closed in August 2007 and patients again were referred to the remaining CCDPH Dental Offices. The equipment from Skokie was long past its useful life and was sent to salvage.
4. In July 2009, the South Holland Dental Office including all equipment was transitioned to Aunt Martha's, a federally qualified health center (FQHC). Aunt Martha's took over the location in a partnership agreement and was able to provide a full spectrum of health services including dental, primary care, and other social services in a "one stop" location. Patient records and the CCDPH Dental Staff were assigned permanently to the Cottage Grove Health Center (ACHN Facility). Also, the digital x-ray equipment was removed from the South Holland Office and is scheduled to be installed in our Maywood clinic when the necessary build out is completed to house the unit.

5. In September 2009 due to a Public Health Emergency, ALL Dental visits were stopped, patients were referred to Stroger Hospital Dental Clinic and CCDPH Dental Staff were reassigned to the H1N1 response. Dental visits resumed in March of 2010 at the CCDPH Dental offices.

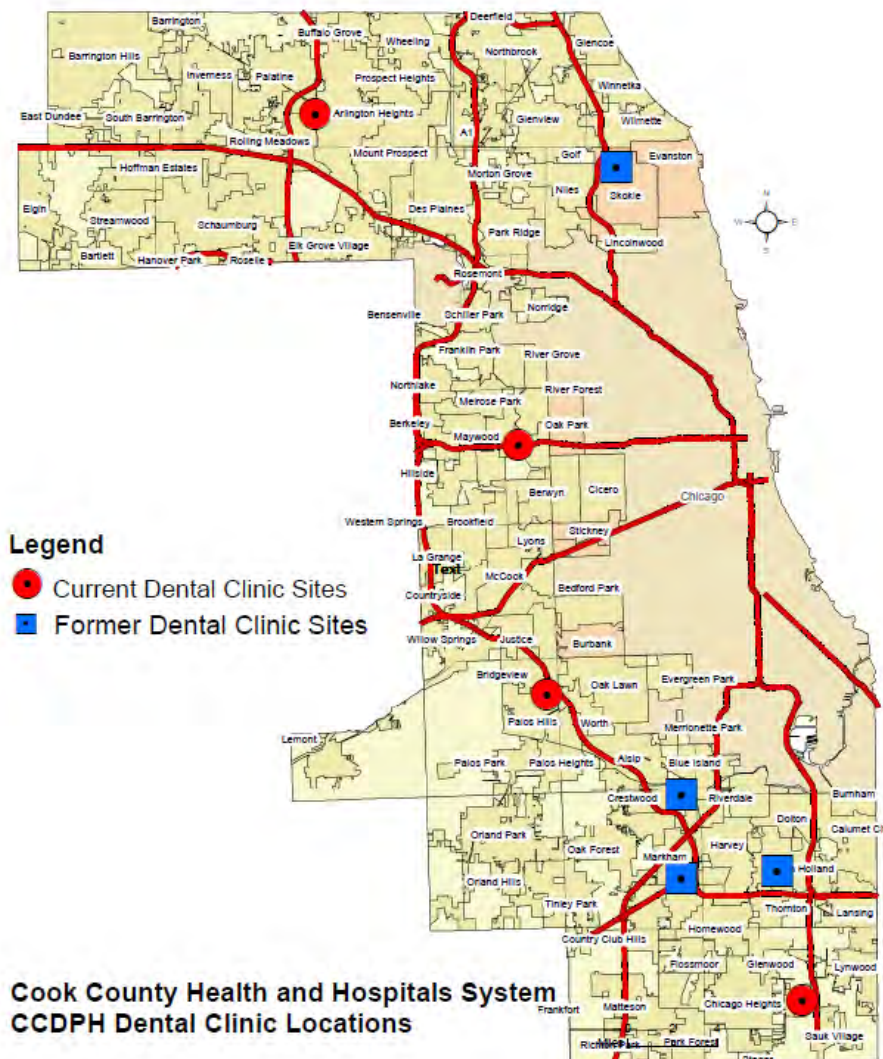
CCDPH dentists do a restricted menu of procedures which include; extractions, cleaning, scaling, root cleaning, prophylaxis, restorations (resins and amalgams). Other procedures are referred to either Stroger Hospital Oral Surgery or the University of Illinois.

Figure 2. Current and closed clinic locations and the communities the CCDPH Dental program serves:

Currently the CCDPH has four Dental Clinics serving the residents in suburban Cook County. They are all open Monday – Friday, 8:30am to 4:30 pm, and visits occur by appointment only. The locations are as follows:

Cook County Department of Public Health - Dental Clinics 2010

District	Clinic	Address	City
North	North District	2121 Euclid	Rolling Meadows, IL
West	West District	1701 South First Avenue	Maywood, IL
Southwest	Southwest District	10220 South 76th Avenue	Bridgeview, IL
South	Cottage Grove Health Center	1645 Cottage Grove Avenue	Ford Heights, IL



Source: CCDPH, CEHP, 2010

Table 1. Staff assigned to location and their salary/hourly compensation

There are a total of 10 FTE’s currently assigned by CCDPH to provide Dental Services to the qualified residents of Suburban Cook County. They are assigned and compensated as follows:

District	Clinic	City	Job Type	Hourly Rate	Annual Salary
North	North District	Rolling Meadows	Dentist II	\$ 51.790	\$ 107,723
North	North District	Rolling Meadows	Dental Assistant	\$ 24.711	\$ 51,399
West	West District	Maywood	Dentist II	\$ 51.790	\$ 107,723
West	West District	Maywood	Dental Assistant	\$ 23.578	\$ 49,042
Southwest	Southwest District	Bridgeview	Dentist II	\$ 51.790	\$ 107,723
Southwest	Southwest District	Bridgeview	Dental Assistant	\$ 24.711	\$ 51,399
South	Cottage Grove Health Center	Ford Heights	Dentist II	\$ 51.790	\$ 107,723
South	Cottage Grove Health Center	Ford Heights	Dental Assistant	\$ 25.947	\$ 53,970
South	Cottage Grove Health Center	Ford Heights	Dental Assistant	\$ 25.947	\$ 53,970
South	Cottage Grove Health Center	Ford Heights	Dental Assistant	\$ 25.947	\$ 53,970

Total CCDPH Dental Program Hourly Rate / Salary **\$ 358.001 \$ 744,642**

Total Fringe Benefits **\$ 241,068**

Total CCDPH Dental Program Salary and Fringe Benefits **\$ 985,710**

Patients Visit, Dental Services provided and Wait time information

Generally, patients are currently seen by appointment only. Each office tries to keep time for emergency visits daily. On occasion, patients may walk in and depending on their need, they may be seen as soon as possible or a visit is scheduled. Initial visits are currently scheduled 2 to 3 months in advance. Follow up emergency visits are normally scheduled within a 3 week period. Routine follow up visits are also scheduled 2 to 3 months out. Each patient visit on average takes 45 minutes. Due to some patients failure to show at assigned appointment times, patient appointments are double booked.

CCDPH dentists do a restricted menu of procedures which include; extractions, cleaning, scaling, root cleaning, prophylaxis, restorations (resins and amalgams). Other procedures are referred to either Stroger Hospital Oral Surgery or University of Illinois Dental School at Chicago.

Table 2. Annual patient visits and staffing by year and region.

Regional CCDPH Dental Visits					Number of Dentist
	North	West	Southwest	South	
2000	3,544	1,758	1,684	4,911	6
2001	3,261	1,677	1,762	4,943	6
2002	3,246	1,446	1,576	4,188	6
2003	2,957	1,698	1,229	5,108	6
2004	3,395	1,773	1,449	4,450	6
2005*	2,703	1,630	1,405	3,580	5
2006	2,233	1,371	1,242	2,272	4
2007	2,485	1,676	1,340	2,268	4
2008	1,279	1,454	1,191	2,010	4
2009!	960	1,079	1,184	1,734	4

***Dental sealant program discontinued**

! H1N1 response

Table 3. Past and Current Dental Office Locations

Cook County Department of Public Health - Dental Clinic Locations

Dental Office Location	Clinic Location	Time Period		Status of Remaining Inventory
		From	To	
Markham	16501 South Kedzie Parkway Markham, Illinois 60472	2000	2005	End of Life and Salvaged.
Robbins	13450 S. Kedzie Ave. Robbins Illinois 60472	2000	2006	Equipment not in use and owned by ACHN.
Skokie	5600 Old Orchard Road, Skokie Illinois 60077	2000	2007	End of Life and Salvaged.
South Holland	64 W. 162nd Street, South Holland Illinois 60473	2005	2009	Site transitioned to Aunt Martha's. CCDPH patient records and Dental Staff relocated to Cottage Grove (Ford Heights) Clinic. Equipment belongs to ACHN.
Rolling Meadows (North District Office)	2121 Euclid Avenue, Room 250 , Rolling Meadows, Illinois 60008-1566	2000	Present	Currently patients are seen at this location 5 days per week.
Maywood (West District Office)	1701 South First Avenue, Room 102, Maywood, Illinois 60153-2005	2000	Present	Currently patients are seen at this location 5 days per week.
Bridgeview (South-West District Office)	10220 South 76th Avenue, Room 250, Bridgeview, Illinois 60455-2425	2000	Present	Currently patients are seen at this location 5 days per week.
Cottage Grove Health Center (ACHN)	1645 Cottage Grove Avenue, Ford Heights, Illinois, 60411	2000	Present	Currently patients are seen at this location 5 days per week.

Recommendations

- The uninsured and underinsured residents of Cook County need access to high quality dental services. However, providing Dental Services at CCDPH sites may not be the best way to provide care to Cook County residents. Oral Health should be part of comprehensive primary care; and is encouraged and subsidized in the FQHC programs. Therefore, we should transfer our Dental Program and resources to ACHN; and the use of dental hygienists should be incorporated in the staffing models. An examination of alternate staffing models such as the use of Dental Hygienist to provide basic dental services should be considered.
- An assessment including cost effectiveness and efficiencies should be performed in order to evaluate the feasibility of continued dental services and its impact on CCDPH. This assessment should include a review of alternate models for providing dental care to the citizens of Cook County, working with FQHC's or Private Providers.

Appendix A.: Annual Dental Visits per CCDPH Dental Clinic Site

Year	Total	North		West	Southwest	South			
		Rolling Meadows	Skokie	Maywood	Bridgeview	Robbins	Markham	Cottage Grove	South Holland
2000	11,897	2,123	1,421	1,758	1,684	2,016	1,605	1,290	
2001	11,643	1,876	1,385	1,677	1,762	1,743	1,725	1,475	
2002	10,456	1,828	1,418	1,446	1,576	1,427	1,303	1,458	
2003	10,992	1,899	1,058	1,698	1,229	1,719	1,932	1,457	
2004	11,067	2,071	1,324	1,773	1,449	1,859	1,429	1,162	
2005	9,318	1,599	1,104	1,630	1,405	1,319	442	948	871
2006	7,117	1,595	638	1,371	1,242			411	1,861
2007	7,769	1,778	707	1,676	1,340			446	1,822
2008	5,934	1,279		1,454	1,191			150	1,860
2009	4,957	960		1,079	1,184			695	1,039